

# FLORIDA DESIGN

THE MAGAZINE FOR FINE INTERIOR DESIGN & FURNISHINGS

VOLUME 23#3

## DAZZLING HOMES ON THE WATER



**EXCITING STYLES  
FROM THE TOP  
FURNITURE SHOWS**

\$6.99 ISSUE 33-13



DISPLAY UNTIL 12.24.13



INTERIOR DESIGN Timothy DuPont with Elias Sol,  
Blue, A Design Company, Inc., Miami, FL  
TEXT Erin Marvin  
PHOTOGRAPHY Troy Campbell, Miami, FL





# MIAMI'S BEST DRESSED

Luxurious Finishes Fashion A Miami Beach  
Condominium Bejeweled In Mother Of Pearl,  
Alabaster, Goldstone, Marble And More



The homeowners' collection of sculpture and artwork is sprinkled throughout the condominium. An Arthur Court sculpture atop a pedestal from Niba Home announces entry to the living area, where a portrait of the couple by famed Miami artist Romero Britto hangs beside a polished Steinway piano.



TUCKED INSIDE THE exclusive Apogee building and boasting expansive views of both Fisher Island and Miami Beach, Fla., this breathtaking condominium has seen a lot of beautiful people come through its doors. A frequent host to charity functions and society soirees, the homeowners' 4,145-square-foot lavishly adorned residence leaves nothing to the imagination: each finish, fabric and piece of furniture was chosen specifically for its quality, beauty and dramatic effect.

The couple asked for glamor and interior designer Timothy DuPont gave it to them in spades by outfitting the home in such luxurious finishes as mother of pearl, alabaster, goldstone, onyx, white and black marble, and gold and silver leaf. Supple textures throughout add another layer of style. "The details made all the difference," DuPont says.

An exquisite jewel-toned color palette wraps the generous space. Balancing the shimmering tones is a strategically devised 360-degree lighting plan. Backlit columns delineate the interior spaces, while Baccarat chandeliers and accent sconces, ceiling cove lighting, and recessed downlights and floor uplights illuminate the open social areas and cast guests in a flattering sun-kissed glow.



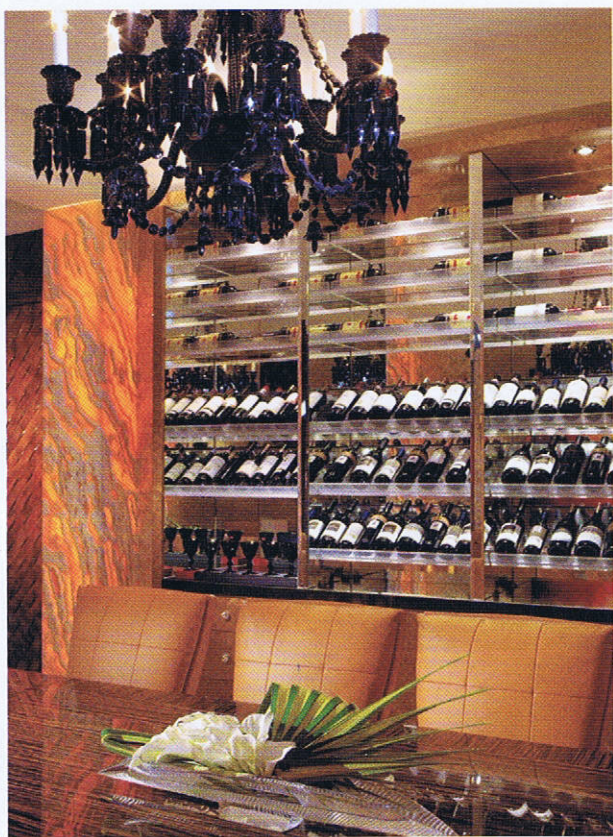
Shimmering mother-of-pearl wall covering by Maya Romanoff catches and reflects light from a Baccarat chandelier and sconces designed by Philippe Starck, and backlit alabaster-wrapped columns.







A custom wine cabinet crafted by Bon Vivant lines the dining room wall. With the bottom portion temperature-controlled, the space coolly fits a few hundred bottles.



Rather than choose the cookie-cutter floor plan that is common to most condo buildings, the homeowners and DuPont designed a custom living space. Together they changed the original three-bedroom, three-and-a-half bath layout into a more suitable two-bedroom, three-bath home with a spacious open floor plan. Furniture is kept to a minimum in the social areas so upwards of 200 guests can comfortably mingle inside, champagne flutes in hand.

Guests arrive via a private elevator. Stepping into the grand reception area, they are greeted by a striking Inca onyx, goldstone and black Portoro marble intaglio that grounds the space in geometric-inspired circles and stripes. Acting as a foil to the straight lines, ribbons of glossy, mahogany-stained teak diagonally undulate across the walls.







ABOVE: A small sitting area cozies up to the custom-designed kitchen, where cabinetry topped in black absolute granite houses a Miele cooktop and double ovens. Counter stools cushioned in Spinnbeck leather and an embossed crocodile-leather club chair invite a few minutes of relaxation pre- or post-party.



"EVERYTHING SPARKLES AND GLITTERS EVERYWHERE ... FROM THE MOTHER-OF-PEARL WALLS, TO THE ALABASTER COLUMNS AND CRYSTAL CHANDELIER," DUPONT SAYS.



Glass-like white quartz flooring leads to an intimate dining area that easily accommodates 10 (larger sit-down dinner parties are held in the building's posh banquet room). Plush leather-clad chairs from David Sutherland cozy up to a Macassar ebony wood table beneath the tray ceiling bedecked in gold leaf. A black crystal Baccarat chandelier and coordinating sconces illuminate the space.

Macassar ebony continues into the kitchen, where cabinetry polished to a high gloss offers a mirror-like reflection. More than just a showplace, the back wall holds a refrigerator and freezer, the Sub-Zero wine refrigerator, convection ovens, the microwave/steam oven and a built-in Miele coffee maker. A large gas cooktop caters to multiple courses. Five Vira pendants from Carriage House spotlight the 14-foot-long island, which conceals refrigerated drawers and offers plenty of counter space for caterers to create platters of hors d'oeuvres or the homeowners to enjoy an intimate dinner for two when they're not entertaining. Ostrich leather counter stools make a comfortable perch for conversations and light fare.

The cool, calming master bedroom is dressed in shades of soft blues and pale grays beneath a silver-leaf ceiling. Edge-lit silk provides the backdrop for the shagreen-embossed bed dressed in Bergamo's Italian silk bedding. A plush club chair and wool shag area rug anchor the space, while misty blue-gray silk sheers pull open to reveal a bird's-eye view of Fisher Island and the Atlantic Ocean beyond.

ABOVE: As evidenced by Scalamantré silk on the headboard wall, sheepskin pillows and a shag area rug in the master bedroom, "texture was very important in all of the design choices," interior designer Timothy DuPont says.